



# THE FUTURE CARE PROJECT

INSPIRING INNOVATIVE  
APPROACHES TO  
REGIONAL CHILD CARE

# FOUNDING IMPACT PARTNER PROSPECTUS

Designed for organisations ready to move  
from good intentions to meaningful impact.



[WWW.THEFUTURECAREPROJECT.COM.AU](http://WWW.THEFUTURECAREPROJECT.COM.AU)

# THE OPPORTUNITY

The Future Care Project is Australia's first regionally led social enterprise redesigning how childcare is accessed in rural and remote communities.

✗ This is not a pilot.

✗ This is not theory.

✓ This is action and delivery.

We unlock workforce participation and strengthen regional economies by supporting families and childcare providers with flexible, community-based childcare solutions where traditional systems fall short.

We are seeking Founding Impact Partners to stand with us and be proudly associated with a solution that is already changing lives and designed to scale nationally with your help.

## WHY IT MATTERS

In regional Australia, childcare is critical infrastructure.

**When childcare is unavailable:**



Parents can't work



Businesses can't staff



Communities stall

**The Future Care Project creates:**



Flexible, in-home and community-based childcare pathways



Business and funding support to assist new childcare providers



Practical solutions that adapt to the needs of rural and remote communities

Your sponsorship directly supports delivery, not administration, not awareness campaigns, not reports that sit on shelves.

## WHAT YOU RECEIVE (REAL VALUE, NOT LOGO SLAPS)



### BESPOKE IMPACT VIDEO

A professionally produced, brand-aligned video that:



Shows exactly where your investment went

Features real families, regional businesses, carers and communities



Demonstrates your organisation's leadership in driving meaningful change



Is approved for websites, LinkedIn, ESG/CSR/CBA reporting and stakeholder use



# EVERGREEN CO-BRANDED SOCIAL ASSETS

Custom social tiles your team  
can use anytime to say:

“ This is what we  
backed and this is  
how lives were  
changed.



## VISUAL EVIDENCE PACK (which show you actually give a sh\*t)

High-quality photography , short-form video (think TikToks, Reels and FB Stories) and a suite of social media tiles capturing:

On-the-ground delivery



Community engagement

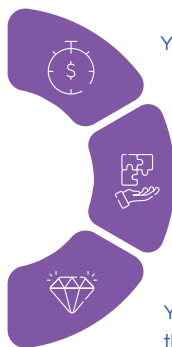


Real outcomes in action



... all with your brand attached keeping it authentic and genuine

### WHAT THIS PARTNERSHIP SAYS ABOUT YOU



You invest early, not late

You back solutions,  
not slogans

You show your values  
through action

This is marketing with credibility and impact with  
real evidence.

### PLAIN-ENGLISH IMPACT REPORTING

Clear outputs, outcomes and community voice  
suitable for:



ESG / CSR / CBA reporting



Board updates



Investor and stakeholder  
communications

Builds trust through real, measurable outcomes  
that create investor confidence.





## SPONSORSHIP TIER FOUNDING IMPACT PARTNER

\$20,000 investment

Where does your money go?

It funds educator scholarships that enable carers to gain recognised qualifications and access practical business and set-up support delivering sustainable childcare services across regional and remote communities where traditional models are not viable.

This investment strengthens communities, supports working families and helps secure a stronger future for all of Regional Australia.

Curious? Let's talk. Sponsorship opportunities are strictly limited.



0413 030 833



[hello@thefuturecareproject.com.au](mailto:hello@thefuturecareproject.com.au)



**THE FUTURE CARE  
PROJECT**

INSPIRING INNOVATIVE  
APPROACHES TO  
REGIONAL CHILDCARE